



Strategic Planning Meeting Minutes – January 14, 2017

The Strategic Planning Meeting of the Collegiate Peaks Chapter of Trout Unlimited (CPC) was held at Mt. Shavano Manor meeting room, Salida, CO on January 14, 2017. Keith Krebs opened the meeting at 10:25 am.

Board Member Attendees:

Officers: Keith Krebs, Blake Fanning, Jerry Wright, Tom Arnot

Board Members: Bill Perrill, Fred Rasmussen, Gene Milus, Mike Perry

The minimum number of board members was in attendance to constitute a quorum.

Other attendees: Pam Simpson, Jim Impara, Barbara Plake, Dick Isenberger, Reed Dils, Karen Dils, Norm Lastovica

COLLEGIATE PEAKS CHAPTER TROUT UNLIMITED STRATEGIC PLAN FOR 2017

CPC MISSION:

TO CONSERVE, PROTECT AND RESTORE COLORADO'S COLD WATER FISHERIES AND THEIR WATERSHEDS.

CPC VISION:

TO ENSURE THAT CURRENT AND FUTURE GENERATIONS OF THE UPPER ARKANSAS RIVER VALLEY ENJOY, APPRECIATE AND CHERISH OUR WATERS AND TO CARRY ON THE MISSION OF PROTECTING THE QUALITY WATERSHED FOR PRESENT AND FUTURE GENERATIONS.

OBJECTIVES:

- **What is the role of the Chapter?**
- **What are we trying to accomplish?**
- **What should be changed from previous years?**
- **What is the path forward for the next two to three years?**

Meeting Rules:

- This meeting generally to follow Roberts Rules of Order.
- Motions and Votes may be required for several topics: Some by full group, some may be referred to the Board of Directors (BoD) for a vote.
- Please formulate your ideas, comments and suggestions to fit under the following Chapter components and topic categories:

- I. CONSERVATION**
- II. ENGAGEMENT AND ADVOCACY**
- III. EDUCATION**
- IV. COMMUNICATIONS AND MARKETING**
- V. FUNDING**

I. CONSERVATION

A. Goal: Move forward with ELC (Ecosystem Learning Center) FORMERLY SARELC -

1. Performance Measures (action plan):

a. Most important current need is **increased funding**

- A little less than half of the Phase I funding is in hand

Embrace-a-Stream grant received	\$2,700	Must be used in 2017
Nestle Waters donation	\$1,000	
Chapter contribution	<u>\$3,160</u>	
Total in hand	\$6,860	

Total Phase I design budget \$15,000

Shortage \$8,140

Another \$15K needed to fund the implementation phase

- Tom Arnot proposed that CPC fund the remainder of the design phase in its entirety immediately to get this project moving. We were having the same conversation in last year's Strategic Planning meeting and we are now less than half way to our goal. If you only make it half way to your goal every year, you will never get there. This project has very high visibility and is directly in line with our conservation and educational mission. It is right in our back yard and will directly involve the local community. Our sponsors, donors and members give us money because they believe in our mission – not because they want us to put it in the bank. The community will be well aware of this project which will translate to more exposure for our Chapter, more members, more and larger sponsorships.
- A review of current finances revealed that there is about \$27K in our checking account and \$16K in the "Coldwater Fund". There may be some other funds – Jerry Wright to research what funds the chapter has available.
- A question was raised about the "Coldwater Fund" – is it dedicated for some specific purpose? Norm Lastovica said his recollection was it was simply a bank account that the chapter created with no specific purpose in mind.
- Fred Rasmussen noted that if some members knew how much money we had sitting in the bank, they might not be happy about it.
- Keith Krebs would like to wait until after the Caddis Festival to see how our finances look at that point.
- Barbara Plake noted that we need to keep some level of funds in the bank – not sure what this level is, but we need to have a buffer.
- Barbara Plake asked if we could come up with a different name for the project – SARELC is cumbersome. After some discussion, it was decided to simplify the name to Ecosystem Learning Center – ELC.
- A discussion was held about having a project-specific fundraising event for the ELC at the Caddis Festival. Perhaps a special category of sponsorship, or a special live auction item first on the agenda. Or perhaps put up an informational easel soliciting dedicated sponsorships/donations and announce to the crowd. This will be discussed in more detail at the Caddis Festival Banquet Committee meetings.
- Reed Dils noted that Andrew Mackie's presentation to the group before this meeting was good but one potential hangup that must be addressed is the private landowner across the South Arkansas from the ELC site. We need to have a firm written agreement in place on what they will let us do.

Collegiate Peaks Chapter Trout Unlimited
Strategic Planning Meeting Minutes – January 14, 2017 (continued)

- b. Establish implementation team for ELC - At least 4 members
 - Tom Arnot volunteered to be on this team

 - c. Write fundraising grant(s) for implementation
 - Get Outdoors Colorado (GOCO)
 - This may be a funding source for later in the project – implementation phase.
 - Gene Milus asked about the recent Inspire Chaffee County meeting. Keith Krebs has looked into it and decided it is not a good fit for us at this time.
 - Collaborate with Audubon Society?
 - Other?

 - d. Complete initial fish count by electro-shocking with local CPW Biologist
 - e. Continue with successful Salida High School stream science classes
 - f. Compile information database to date
 - g. Establish restoration volunteer base – 10? committed members
 - h. Other?
- B. Goal: Identify/Implement new Stream Conservation projects
- 1. Performance Measures (action plan):
 - a. Establish larger conservation volunteer base
 - Jim Impara – we used to have more volunteers. The agencies (CPW, etc) are more restrictive in asking for volunteer labor. They are using prison and SCC labor and paying for it.
 - Keith Krebs recently received an email from Cheyenne Mountain Chapter wanting to collaborate on some work on South Platte restoration projects. Want to meet January 26th in Lake George to discuss. This could be the start of a big collaborative project.
 - Reed Dils asked what the project is? Make sure we want to participate before we commit. Get details at Jan 26 meeting.
 - b. Implement one “Bigger Project” for 2017:
 - Badger Basin (South Platte Middle Fork) restoration/fencing with Cheyenne Mountain Chapter
 - Possible fit with item B.1.a. above - opportunity with CMC
 - c. Identify 2 stream habitat restoration sites different from home waters
 - Return to Kerber Creek
 - CPC was contacted by Carol Edrington, property owner. Fish are doing well, stream is braided – wondering if we can get it fixed?
 - Jason Willis to contact Carol Edrington.
 - Jim Impara said he talked with Jason and that the job is too big – requires heavy equipment
 - Collaboration with other Chapter(s) on at least 1 project
 - Possible fit with item B.1.a. above - opportunity with CMC

- d. Team with at least 2 Agencies
 - Central Colorado Conservancy (CCC – formerly LTUA)
 - South Arkansas River
 - CPW
 - Fin-clipping – Jim Impara indicated this may change going forward. There has been some research and discussion about whether fish may use the adipose fin.
 - Fish stocking
 - Riparian improvements
 - BLM
 - USFS

II. ENGAGEMENT & ADVOCACY

A. Goal: Increase attendance/participation at all Meeting/Events

1. Performance Measures (action plan):

- a. Increase attendance at Member meetings to average at least 40
 - NTU Communications emails have ideas
- b. Develop Participation Plan
 - Keep notebook of participants – Bill Perrill will start keeping track of attendance.
 - Reward attendance? For example, if you attend at least 2 meetings and/or participate in at least 1 activity, you get a gift card, fishing day, or ???
 - Blake Fanning asked if CPC had ever done a member survey. Yes, but the participation was very low...
- c. Revise current BoD and Member meeting schedule (see attached)
 - Increase number of Member meetings to > 6?
 - We currently have 7 member meetings scheduled for 2017
 - Change venues?
 - 2017 Member meetings:
 - Salida = Boathouse (no cost for room)
 - BV = Branding Iron (charge \$50 to use room, no other good locations in BV)
 - Need to have food and drink available for purchase
 - Need to have private and quiet rooms

Discussion points:

- Branding Iron is small, noisy and the food is mediocre.
- Try looking at other options in BV area? Not many choices that serve food and drink.
- Not nearly as many members in BV area – do we need to have any member meetings in BV?
- Try a member meeting at Sangre de Cristo and see how it goes – it is big and quiet.
- Try a member meeting at Mt. Shavano Manor and see how it goes.
- Younger people do not like Mt. Shavano Manor. Previous feedback indicated that a venue with food and drink was desired for member meetings.
- Could we have a social hour at Branding Iron, then move meeting to Sangre de Cristo?

Collegiate Peaks Chapter Trout Unlimited
Strategic Planning Meeting Minutes – January 14, 2017 (continued)

- Some people may not want to come to social hour – make sure the announcements state clearly that the social hour is optional.
 - Shallots is too small, noisy and service is slow.
 - January 11 Member meeting at Boathouse was well received. Keith received several positive comments.
 - Fred Rasmussen suggested that we have all future member meetings at the Boathouse in Salida. Consensus was to try this and see how it goes.
 - 2017 BoD meetings:
 - Salida – all meetings will be at Mt. Shavano Manor meeting room
 - BV – all meetings will be at Sangre de Cristo Electric Association meeting room
 - d. Schedule 4 Member meeting programs 3 months in advance
 - Re-establish Program Committee of at least 3 members
 - Develop quality programs to attract 40 members
 - Discussion points:
 - Barbara Plake and Karen Dils noted that there were several good presentations at the recent Fly Fishing Show in Denver. Orvis, Mike from 2 Rivers, Women's groups, etc.
 - There are 16 CPW biologists to draw from
 - Reed Dils mentioned that Landon Mayer of CMC might be a good option – he puts on a really good presentation.
 - Karen noted that other chapters put their programs on their websites – we could mine their sites for options
 - Barbara Plake asked if we cover expenses for presenters – Keith indicated that we usually cover dinner and lodging.
 - Fred Rasmussen said we need to talk about fish to get a good turnout.
 - Gene Milus asked if we could get a presentation on Czech nymphing.
 - Jerry Wright asked about having someone from CSU to speak – we funded the Behnke chair. He will follow up.
 - Reed Dils mentioned that Bob Good, developer of the Colorado Caddis would also be a good program.
 - e. New Member Recruitment
- B. Goal: Improve tools for leadership succession beyond Bylaws requirements
1. Performance Measures (action plan):
 - a. Build community culture within the Chapter?
 - b. Develop structure for recruiting 2 new leaders per year
 - Each officer is responsible for recruiting his/her replacement
 - c. Establish candidate slate committee
 - d. Other ideas?

Collegiate Peaks Chapter Trout Unlimited
Strategic Planning Meeting Minutes – January 14, 2017 (continued)

C. Goal: Improve Membership and Outreach

1. Performance Measures (action plan):

- a. Limit membership "Churn" to no more than 3% of roster
 - Membership committee to track changes
 - Monthly contact of 6 inactive members by active (BoD) members (telephone or 2+ for personal visit)
 - Other ideas?
 - Dick Isenberger noted that recruitment is best accomplished through personal contact. CPC used to ask members to engage other members. Perhaps implement a point system for recruitment and award a prize to the person with the highest points every month or at end of year.
 - Karen Dils suggested we have business cards printed with our website address for board members.

- b. Increase member involvement as Volunteers to 5% of membership
 - Refer to Participation Plan above
 - Other?

- c. Increase fishing opportunities/activities for veterans by 15%
 - One year free membership to vets?
 - Engage with Casting for Recovery
 - Maintain 2 expeditions per year with Project Healing Waters Fly Fishing
 - Jim Impara noted that they always have lots of volunteers for this activity. Jim sent out notes to his contacts letting them know that Gene Milus was the new point of contact.
 - Engage with Veterans Expeditions
 - Keith Krebs has contacted Veterans Expeditions
 - Other?
 - Reel Recovery has retreats near Kremmling every summer.

- d. Increase participation of under-represented demographics:
 - Youth (Underserved populations through GARNA)
 - Improve meeting attendance by Women (50% of FlyGals members)
 - Barbara Plake noted that there was a poor turnout of FlyGals for the July member meeting, a women-oriented presentation from Shelly Walshack on her book, 52 Rivers. Over 100 women are on the FlyGals list – only 4 showed up for the meeting.
 - Trying to get Jen Lofgren for July meeting this year on the history of women in fly-fishing.
 - People of color

Collegiate Peaks Chapter Trout Unlimited
Strategic Planning Meeting Minutes – January 14, 2017 (continued)

D. Goal: Re-establish active Committees with Chair (C) (List of committees with descriptions attached)

1. Performance Measures (action plan):

- a. Projects: **Chair needed**
- b. Volunteer Coordination: Ann and Henry Klaiman
- c. Membership: (C) Bill Perrill, Eric Heltzel)
- d. Programs: (C) Keith Krebs, **Help needed**
- e. Finance: (C) Keith Krebs, Jerry Wright (Treasurer), Bill Perrill
- f. Communications: Tom Palka (Website), Fred Rasmussen (Newsletter), Keith Krebs (Media)
 - Need 10 additional newspaper articles for 2017, 750 words.
- g. Youth Education: (C) Keith Krebs, Eric Helzel
- h. Adult Activities: **Chair needed**
 - Fly Fishing 101, or similar activity for members
 - Jim Impara noted that lots of guys want activities similar to what FlyGals do. Bill Perrill mentioned that we could have a pair up with a member to go fishing. Barbara Plake noted that FlyGals has a BFF – Best Fishing Friend – program where you can sign up on a contact list to go fishing. Very easy to set up.
- i. Special Events: (C) Larry Payne
 - What is schedule for 2017 activities?
- j. Community Engagement:
 - Ann and Henry Klaiman (Salida); Bob and Marjie (BV); Jim Impara (Hwy.)
 - Gene Milus has volunteered to clean out monofilament collection tubes in Salida at Franz and Sand Lakes
 - Jerry Wright has volunteered to clean out monofilament collection tubes near BV at Cottonwood, Wright and Chalk Lakes
- k. Advocacy Coordinator: (C) Reed Dils, Keith Krebs
- l. Banquet: (C) Pam Simpson
- m. Fly Gals: (C) Barbara Plake, Linda Schuckert
- n. Historian: **Chair needed** - Fred Rasmussen and Steve Craig used to do this. Not a high priority.
- o. Scholarship: (C) Barbara Plake, Dick Isenberger, Fred Rasmussen, Les Stencel, Ellen Bauder, Kato Dee

E. Goal: Potential New "Traditions" for CPC-TU Chapter (from NTU)

1. Performance Measures (action plan):

- a. Mother's Day/Father's Day Weekend Family Fishing Festival
 - We already have 2 fishing derbies
- b. Arbor Day Tree Planting Project
 - Not really our mission
- c. Summer Streamside BBQ and Fishing Weekend (Chapter picnic?)
 - We already do both of these
- d. TroutBlitz Day on a Local River (see ELC above)

Collegiate Peaks Chapter Trout Unlimited
Strategic Planning Meeting Minutes – January 14, 2017 (continued)

- e. Chapter Camping Trips to Area Rivers
 - We already do this
- f. Bar Flies or Flies & Pies Fly Tying Events (see Education section below)
 - Durango does a fly tying event in local bars. Discussion was that it would not work here.
 - Offer a fly tying event separate from the Jamboree? CPC used to do a fly tying event at the Community Center before the Jamboree started up.
 - See if Mountain Mail would write an article on the fly tying event, print flyers to distribute
- g. Aquatic Insect Assessment Day (see Education section below)
- h. Local "One Fly" Competitions (see Funding section below)
 - Gunnison chapter has their Superfly competition. Lots of effort required, low income event, hard to keep it going.
- i. What about the Fourth Friday event this last year?
 - Keith Krebs noted that the person that organized it was an intern and will not be back – it probably won't happen in 2017. It did not really fit our mission – very young kids, bait fishing
- j. Karen Dils asked about organizing a Mystery Fly Fishing Trip where you meet to go fishing and draw your fishing partner's name when you arrive at the meeting place.

F. Other Goal(s):

III. EDUCATION

- A. Goal: Implement ELC for citizen science
 - 1. Performance Measures (action plan):
 - a. See ELC under CONSERVATION section above
- B. Goal: Increase participation and effectiveness of Stream Explorers
 - 1. Performance Measures (action plan):
 - a. Implement Adopt-a-Trout program in 2017 (ELC)
 - b. Implement SE in Buena Vista and Leadville (Collaboration with GARNA)
 - c. Add 2 new team members for involvement in Stream Explorers in Salida and Buena Vista
 - d. Increase participation by adding 2 new team members in BV Conservation Camp
 - e. Increase participation by adding 2 new team members High School Stream Science Classes, Salida
 - f. New programs in Salida and Buena Vista local schools
 - Fishing mentors
 - Other?
 - g. Engage with Five Rivers Club at Western State Colorado University

C. Goal: Establish Adult River-Related Activities

1. Performance Measures (action plan):

- a. Fly casting instruction 2 times per year?
- b. Arkansas River Tours 1 spring, 1 fall – Solicit general population?
- c. Fly tying class 1 time per year in winter?
- d. Stream science class based on Stream Explorers, 1 multi-session in spring?
- e. Other?

D. Other Goal(s): ?

IV. COMMUNICATIONS & MARKETING

A. Goal: More effective communication to general membership

1. Performance Measures (action plan):

- a. Improve/expand Newsletter readership by 10% over previous year
 - Establish feedback loop within newsletter
 - Keith Krebs noted that getting content is the hardest part - deadline is the 23rd of the month.
 - Add 1 conservation article with photos to each newsletter
 - Reed Dils can easily come up with a conservation article to add to newsletter.
 - Include recent CTU article on Barbara Plake
 - Tom Arnot noted that the January newsletter had no notice of the January member meeting. The member meeting was also not included in the website calendar until about 3 or 4 days prior to the meeting. If we want to improve attendance at meetings, we need to do a better job of communicating the meeting schedule to members and the public. Not everyone reads the newspaper.
 - Tom Arnot volunteered to proof-read the newsletter before it goes out
- b. Improve/expand Internet and Social Media – Tom Palka
 - Update Website quarterly
 - Create You Tube video and change every 6 months
 - Include a link to the video from the newsletter
 - Other?

B. Goal: Increase visibility/engagement with local community beyond CPC

1. Performance Measures (action plan):

- a. Exposure in local media
 - Continue monthly newspaper articles in MM and CCT (Add 6 more authors)
 - Continue “Public Service Announcements” for all meetings and events
 - Regular and periodic radio spots or interviews
- b. 1 personal visit by 2+ members to 6 business sponsors each year
- c. Other?

V. FUNDING

A. Goal: Increase yearly net income

1. Performance Measures (action plan):

a. Increase net income from Caddis Festival Banquet by 20 % over previous year

For comparison: CPC-TU 2016 annual fundraiser = \$38,000; Families and Youth Initiatives (FYI) 2016 annual fundraiser = \$45,000; Central Colorado Conservancy (LTUA) 2016 annual fundraiser = \$44,000.

- Ticket prices and sponsorship levels have been increased - approved by Banquet Committee and Board of Directors
- Implement **Give Smart**?
 - Give Smart fundraising system is an electronic bidding system similar to what was used at the CTU Spring Gala. It allows electronic bidding on auction items both in person at the event and for anyone else online. The check out procedure is greatly expedited. Anyone wishing to bid on any auction items at the Caddis Festival would need to do so on a computer device (tablet, phone, etc). Devices can be rented for each event. It is a fee-based subscription service and training is required to implement.
 - Keith Krebs will send Strategic Planning Meeting attendees a case study of another TU chapter in Montana that greatly increased their fundraising through use of this system.
 - Some resistance to implementing this system, especially for this year's event, has been previously discussed at board meetings. At the December BoD meeting, it was decided to table this for the 2017 Caddis Festival because there was not enough time to implement it this year.
- Implement **Ticket River**?
 - Pam Simpson presented a summary of Ticket River (TR) and how it could be used for the Caddis Festival. TR is a fee-based electronic ticket management system endorsed by NTU. The Fly Fishing Film Tour uses it to sell tickets to their events. Fees are 2% of sales plus \$0.50 per ticket. Stripe or PayPal are used to process credit cards, that fee is 2.9% plus \$0.30 per ticket. These fees can either be passed on to the buyers or absorbed by the event host. TR does not have the capability to manage the auction or raffle items. Membership would be notified by email and would then fill out a form online to sign up and make reservations for the event. Pros include recognition of our event on a national level, more widespread notification of the event, analytics available after the event
 - Barbara Plake noted that we only sell about 100 tickets out of about 300 total. Most tickets are given to sponsors. Not sure how TR would manage our sponsor tickets. Barbara also wondered how last minute phone reservations would be addressed – in the past, Barbara has let people make reservations by phone and pay at the door at the pre-order price. Pam noted that you can manually add tickets to the total in the system to keep track of total tickets sold. Barbara noted that this creates two separate ticket management processes.
 - Bill Perrill noted that not all the Caddis Festival attendees are members – invitations are mailed out to past attendees. Dick Isenberger noted that email is unreliable, which is why we use USPS to mail out invitations.
 - Reed Dils mentioned that we do not want to charge any additional fees to our members and other attendees to this event. Give Smart can manage the entire event whereas TR can only manage tickets.
 - After further discussion, the consensus was that Ticket River was not a good fit for our event.

Collegiate Peaks Chapter Trout Unlimited
Strategic Planning Meeting Minutes – January 14, 2017 (continued)

- More widespread local solicitation
 - Better acknowledgement and patronage of contributors
 - Expenses and Contributions by CPC are increasing (A good thing)
 - Other?
- b. "Big Meeting".....Continue with "Movie Night" or "Poker Night" or "Local Band Concert" as "friendraising" or change to fundraising event?
- Increase ticket price and make mandatory?
 - More pre-event advertising?
 - Best film or band selection?
- Discussion:
- Last 3 movie night events have had decreasing attendance and increasing net losses.
 - Keith Krebs: Conservation movie seems stronger than just fishing
 - Steam Plant is big and lighting is a problem.
 - Reed Dils: What about looking at the Community Center? Costs? Capacity?
 - Jerry Wright: what about working with GARNA? Keith indicated they may not want to partner on a film event
 - Dick Isenberger: Movie Night has had 3 years and has not resulted in any appreciable increase in membership. Karen Dils seconded this thought.
 - Keith Krebs noted that it is not a fundraiser.
 - Barbara Plake: Would like to try it again
 - Jim Impara: Timing is important – not too late in the evening
 - Bill Perrill: mostly members in attendance – no followup with non members.
- c. Establish a Grant writing team
- Funding of ELC (See ELC under CONSERVATION section above)
- d. Establish "One-Fly-Fish-off" or other Fishing Competition event for net income of \$1,000 (not supported by 2014 member survey)
- e. Other?

B. Other Goal(s): ?

Meeting adjourned by acclamation at 2:00 pm



Proposed 2017 BoD and Member Meetings Schedule

- January 11** - Member meeting – Boathouse Cantina, Salida
Program: Jeff Spohn, CPW Aquatic Biologist for the upper South Platte River drainage –
Program: “Eleven Mile Canyon Fishery”
- January 14** (Sat.) - **Strategic Planning meeting** – Mt. Shavano Manor,
Salida; 9:00 am to 2:00 pm – Lunch Provided
- February 8** - BoD meeting – Sangre de Cristo Meeting Room, Buena Vista
Program: Tom Palka, “The best way the Chapter can use the Electronic Media”
- March 8** - Member meeting – ~~Branding Iron Restaurant, Buena Vista~~ **VENUE CHANGE TO
Boathouse Cantina, Salida**
Program: Fred Rasmussen, Flaming Gorge + Jason Willis, South Arkansas
- April 12** - BoD meeting – Mt. Shavano Manor, Salida
- May 6** (Sat.) – Caddis Festival Banquet member meeting
Chaffee County Fairgrounds; 5:00 pm to 9:00 pm
- June 14** - Member meeting – ~~Branding Iron Restaurant, Buena Vista~~ **VENUE CHANGE TO
Boathouse Cantina, Salida**
Program: Cat O’Grady, The Drift Fly Shop, Tailwater Fishing
- July 12** - BoD meeting – Sangre de Cristo Meeting Room, Buena Vista
- July 26** – Member meeting – Boathouse Cantina, Salida
Program: TBD?
- August 9** - BoD meeting – Mt. Shavano Manor, Salida
- September 8** (Fri.) – “Big Meeting - Steamplant Ballroom, Salida;
7:00 pm to 9:30 pm – “Movie Night” or “Poker Night” or Local Band Concert?”
- October 11** - BoD meeting – Sangre de Cristo Meeting Room, Buena Vista
- November 11** (Sat.) - Fly Tying Jamboree, Potluck Dinner, Year in Review Member meeting –
Granzella Hall, Salida; 2:00 pm to 5:00 pm + 5:00 pm to 6:30 pm + 6:30 pm to 8:00 pm
- December 13** - BoD meeting – Mt. Shavano Manor, Salida
All BoD and Member meetings are held the second Wednesday of the month from 6:00 to 8:30
pm and are open to everyone. Social time starts at 6:00 pm. Meetings begin at 7:00 pm. Food +
beverages will be available for purchase at **Member** meetings. For more information contact:
Keith Krebs (719-539-6359).

SARELC - South Arkansas River Ecosystem Learning Center - Update

The South Arkansas River Ecosystem Learning Center (SARELC) is under development with the objective of restoring and conserving 475 lineal feet of the South Arkansas River, a main tributary of the upper Arkansas River, in urban Salida. The purpose is to create a long-term site with an outdoor laboratory for learning about and understanding the aquatic ecosystems that enrich the community. This will be facilitated by on-going collaboration of four organizations that share similar missions and have over-arching community orientation and conservation goals: Collegiate Peaks Chapter of Trout Unlimited (CPC-TU); Greater Arkansas River Nature Association (GARNA); the Land Trust of the Upper Arkansas (LTUA); and Southwest Conservation Corps (SCC).

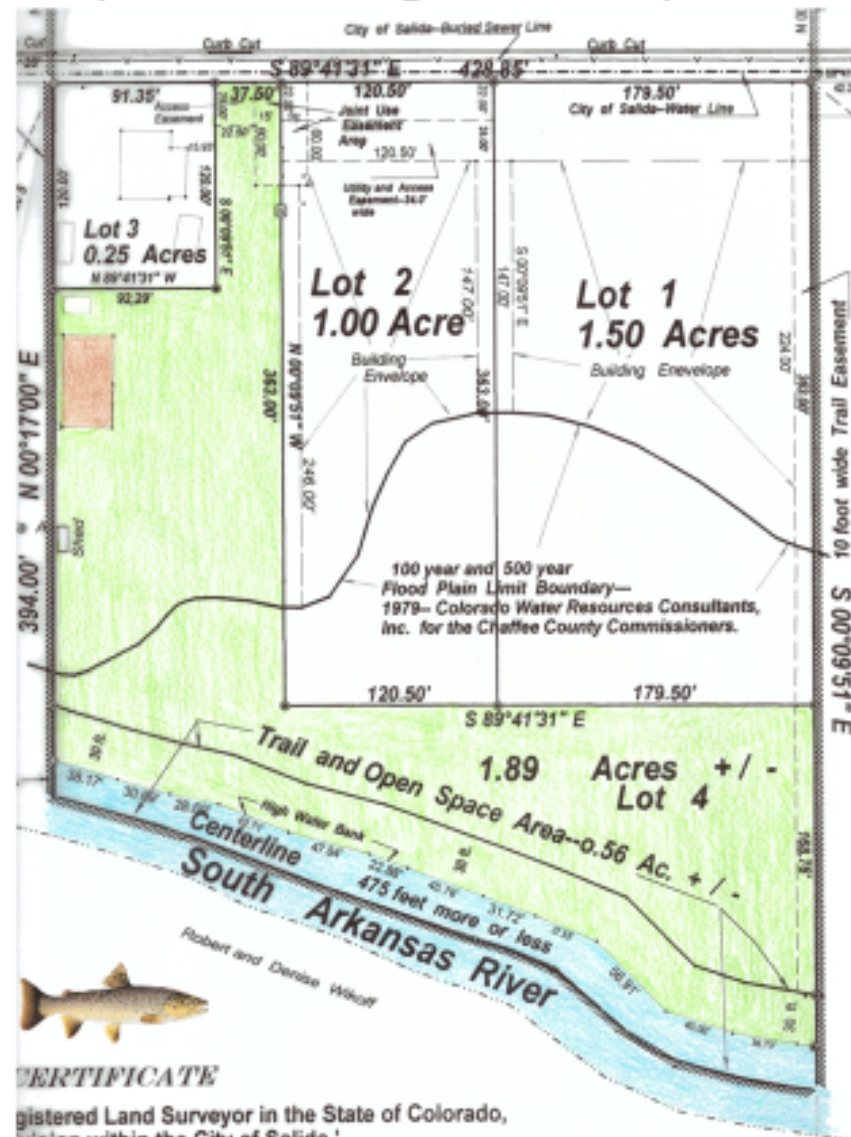
SARELC will provide a site where a variety of student and citizen groups can learn how to observe, measure, record and understand various attributes of the South Arkansas River ecosystem. SARELC will develop and maintain a data base describing both the status of the organisms and the physical nature of the ecosystem.

The site connects to an additional 1,325 lineal feet of River to the east creating a more meaningful and impactful project. Participants will study river profiles, water flows, water quality and do quantitative studies of aquatic invertebrates and riparian organisms over extended periods of time. Baseline studies of the pre-restoration site have already begun. Project participants will compare pre and post restoration data and participate in restoration efforts. As data accumulates, participants will be able to answer important questions about variations in the River and its ecosystem.

SARELC is a component of the overall plan for restoration of the South Arkansas River corridor. A plan that protects the cold water fishery, wildlife habitat and water quality by improving fish habitat, stabilizing banks, removing obstacles and restoring native vegetation. Collegiate Peaks Chapter of TU is requesting \$5,660 from the Embrace-A-Stream Grant Program to assist with this effort. CPC-TU has earmarked \$3,160 in matching funds, GARNA is seeking additional grant money (New Belgium Brewing Water Conservation and Restoration Grant, \$2,700), LTUA will provide funding and \$1,360 in-kind services and SCC, as land owner, provides permanent access to the site and River.

SARELC - South Arkansas River Ecosystem Learning Center - Update

- ❖ MOU between CPC-TU, GARNA, CCC and SCC executed January 2016.
- ❖ CPC-TU has earmarked **\$3,160** for Engineering/Design/Planning in 2017.
- ❖ CPC has received **\$2,700** Embrace-A-Stream Grant from National TU to be used in 2017.
- ❖ A donation of **\$1,000** to CPC from Nestle Waters has been earmarked for SARELC.
- ❖ Phase One Budget including in-kind = **\$14,500**.
- ❖ In collaboration with GARNA, CPC-TU has been using the SARELC site as part of the Salida High School stream sciences program for the last 2 years including initial stream profiling.
- ❖ Initial fish count by electro-shocking with CPW in spring, 2017
- ❖ Channel restoration work to begin spring, 2018.





2017 COMMITTEE DESCRIPTIONS

Projects: NEED CHAIRPERSON

Responsibilities: Schedule and coordinate planning of stream/habitat restoration projects, maintenance activities, and respond to all agency or other requests for assistance on projects. Coordinates with Veterans Service Partnerships Committee.

Volunteer Coordination: Ann and Henry Klaiman

Responsibilities: Maintains chapter volunteer person-hour statistics from all resource related activities. Prepares year-end report.

Membership: (C) Bill Perrill; Eric Heltzel

Responsibilities: Recruitment and nurturing of new members, updating and distribution of membership packets, assignment of mentors to all new members keeping current rosters, Annual distribution & creation of membership lists for members.

Programs: (C) Keith Krebs + NEED ASSISTANT(S)

Responsibilities: Reserve general and board meeting rooms and arrange for entry, e.g. key. Procure interesting and provocative programs for each monthly meeting; set up audio/visual for speakers; provide for refreshments and hospitality at meeting social hour; schedule interesting demonstrations for the social hour whenever possible. Notify the newsletter and local media, in a timely manner, of the next month's programs and where the meeting will take place.

Finance: (C) Keith Krebs; Jerry Wright; Bill Perrill

Responsibilities: Keep record of all chapter income and expenditures. Draft annual chapter budget for Board approval. Insure that there is independent oversight of the chapter's financial condition every year. Administer Coldwater Resource Fund in accordance with Board policy and direction. (Treasurer, President, and one board member comprise this committee.)

Communications: Tom Palka, Fred Rasmussen (NL)

Responsibilities: Through Newsletter, Website, calendar coordinator, and Other Media subcommittees, publicize chapter activities in local, state, and national media on a continuing basis. Utilize e-mail to notify members of upcoming activities and information of interest.

Scholarship Committee: (C) Barbara Plake, Fred Rasmussen, Dick Isenberger, Les Stencel, Ellen Bauder, Kato Dee

Responsibilities: Refer to CPC-TU Policy Statements for Awarding Renewable Annual Scholarships

Education: (C) Keith Krebs; Eric Heltzel

Responsibilities: Insure the success of all chapter activities that are undertaken primarily to interest or educate. Initiate contacts with schools, youth organizations, & town recreation departments to maximize the participation of young people in activities, which promote the development of interested and curious people.

Special Events: (C) Larry Payne; Keith Krebs

Responsibilities: Plan and/or coordinate continuing special events such as chapter trips, Movie Night, picnics, and other social activities approved by the Board and not otherwise included in any other committee.

Community Involvement : Jim Impara; Ann and Henry Klaiman (S); Bob and Marjie Gray (BV).

Responsibilities: Highway clean-ups, River clean-ups and Kids fishing derbies.

Advocacy: (C) Reed Dils + ??

Responsibilities: Establish and coordinate liaison with CTU, NTU, state legislators, county commissioners, and other elected officials to further TU goals of protecting the cold-water resource and monitors various Waster Conservancy Districts. Chairperson is the coordinator for non-project issues, which require action on the part of chapter members.

Caddis Festival Banquet: (C) Pam Simpson

Responsibilities: Plan and conduct the chapter's annual fundraising banquet (Caddis Festival Banquet). Committee is made up from all Board members and chapter volunteers. Chairperson appointed annually by Board.

FlyGals: (C) Barbara Plake; Linda Schuckert

Responsibilities: Plan and conduct the chapter's women's functions to encourage women to become members of TU and to participate in chapter resource projects and other events..

Veterans Services Partnership: (C) Keith Krebs; Gene Milus

Responsibilities: Collaborate and communicate with local veteran organizations. Schedule, coordinate and populate periodic veteran engagement activities including field work for riparian restoration, fishing outings and other activities.